

SOWPARNIKA  
WHISPERING  
PETALS

SOWPARNIKA  
WHISPERING  
PETALS



Scan for  
Location

No 750 1st Main Road AECS Layout C-block Kundalahalli  
Marathahalli, Bangalore - 560 037, India.

## Built To Dream

*A first home is not brick and plaster,  
it is a heartbeat finally finding rhythm.*

*It is the quiet pride of turning the key  
and knowing—this door opens to your tomorrow.*

*It is the balcony light  
that welcomes you back at dusk,  
the kitchen that carries  
the fragrance of your first festival feast.*

*It is the echo of your child's laughter  
bouncing against walls  
that will hold a lifetime of stories.*

*It is the corner where your parents rest,  
the window where you sip your morning tea,  
the floor where your dreams learn to walk.*

*A first home is a promise—  
to belong, to build,  
to believe.*

*At Whispering Petals,  
we celebrate not just homes,  
but the moments that bloom inside them—  
moments that turn firsts into forever.*







## Designed To Celebrate Your Firsts

At Sowparnika's Whispering Petals, your first home becomes the canvas for life's most cherished milestones—the first job celebrated, the first morning tea on your own balcony, the first festival with family, and the first steps of your little one across the living room. Spread across 8 acres in Doddahullur, Bengaluru, this thoughtfully planned community offers 1, 2, and 3 BHK homes designed for the aspirations of upwardly mobile families. With elegant towers rising 19 floors high, premium specifications, and lush green landscapes, Whispering Petals is crafted to give you more than just a house—it gives you an address to call your own, a place where every first becomes a forever memory.



Dream More With

SOWPARNIKA  
WHISPERING  
PETALS







3

elegant towers rising  
19 floors high,  
built to house dreams  
that touch the sky.

762

thoughtfully designed  
apartments where  
every layout feels like it  
was made just for you.







Strong monolithic  
construction that

# safeguards

not just your home,  
but your generations to come.

---

Spacious

# 1, 2, & 3 BHK

homes crafted to grow with your  
family's journey.







Reliable power backup  
that ensures

comfort & peace,  
no matter the hour.

---

Premium finishes &  
fittings that bring

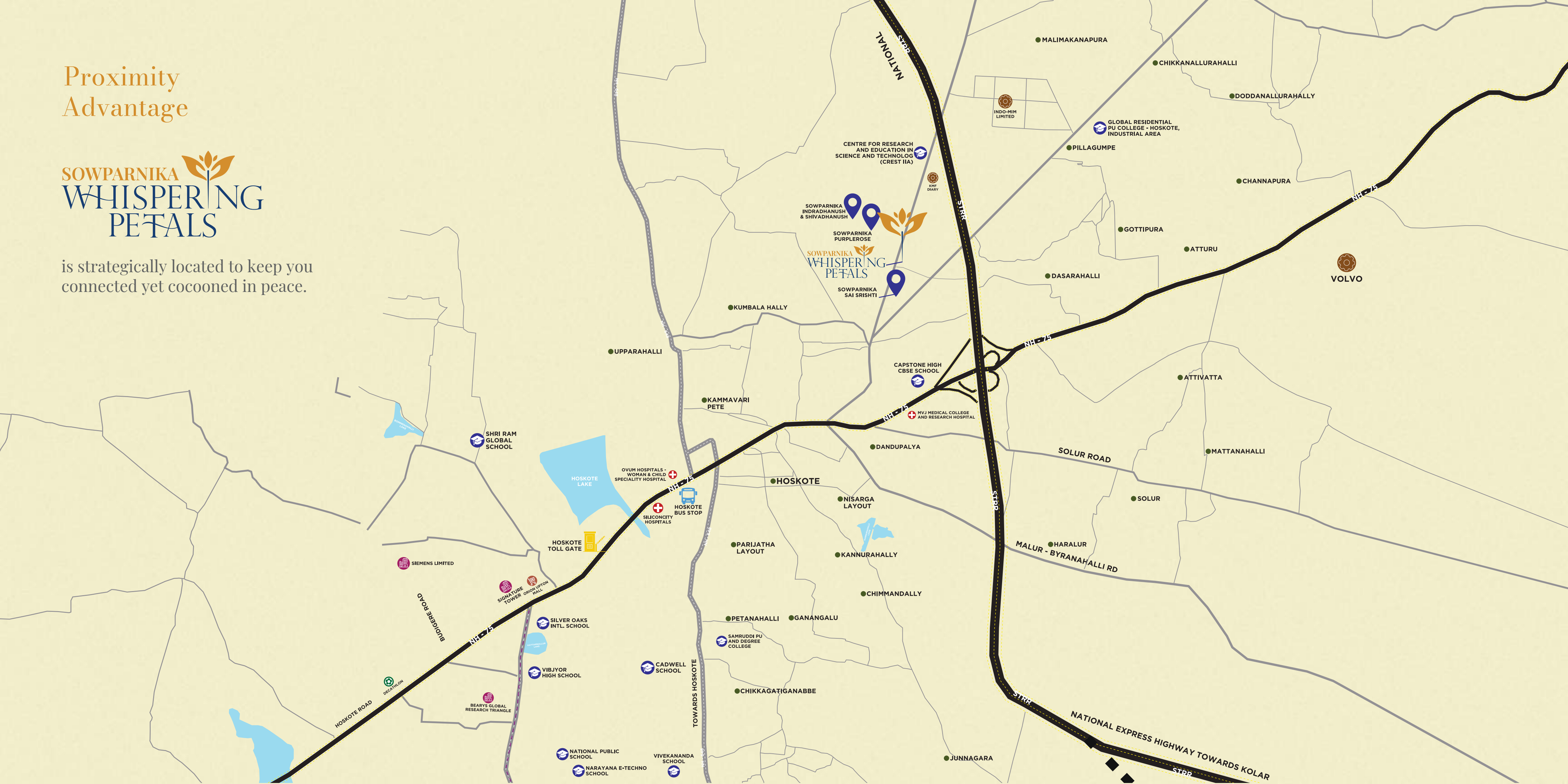
lasting beauty  
to everyday living.



Proximity  
Advantage



is strategically located to keep you  
connected yet cocooned in peace.







- Capstone High School
- Silicon City Hospital
- Ovum Women & Child
- Care Hospital
- Hoskote Bus Stop



- MVJ Medical College & Hospital
- MVJ Medical College

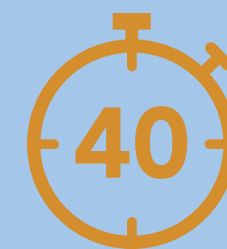


- Whitefield Metro Station
- Vibgyor High School



- Jain Heritage School
- DPS Mallasandr
- Orion Uptown Mall
- Bearys Global Research Triangle
- Aerospace Park

- Manipal Hospital
- Nexus Shantiniketan



- Shriram Global School
- Phoenix Marketcity
- Airport
- HopeFarm Junction
- ITPL — Whitefield
- TCS
- Siemens Ltd





## Amenities



every amenity is designed to  
nurture life's simple joys.





## Grand Entry Portal

A stately welcome that reflects pride every time you come home.



## Volleyball & Half Basketball Court

For moments of play, energy, and togetherness.





## Landscaped Gardens

Breathe easy amid lush greenery that soothes the senses.



## Kids' Play Area

A world of joy where little ones can laugh, learn, and grow.





## Yoga & Meditation Lawn

Breathe easy amid lush greenery that soothes the senses.



## Leisure & Party Lawns

A world of joy where little ones can laugh, learn, and grow.





## Swimming Pool

Breathe easy amid lush greenery that soothes the senses.



## Multipurpose Hall

A world of joy where little ones can laugh, learn, and grow.





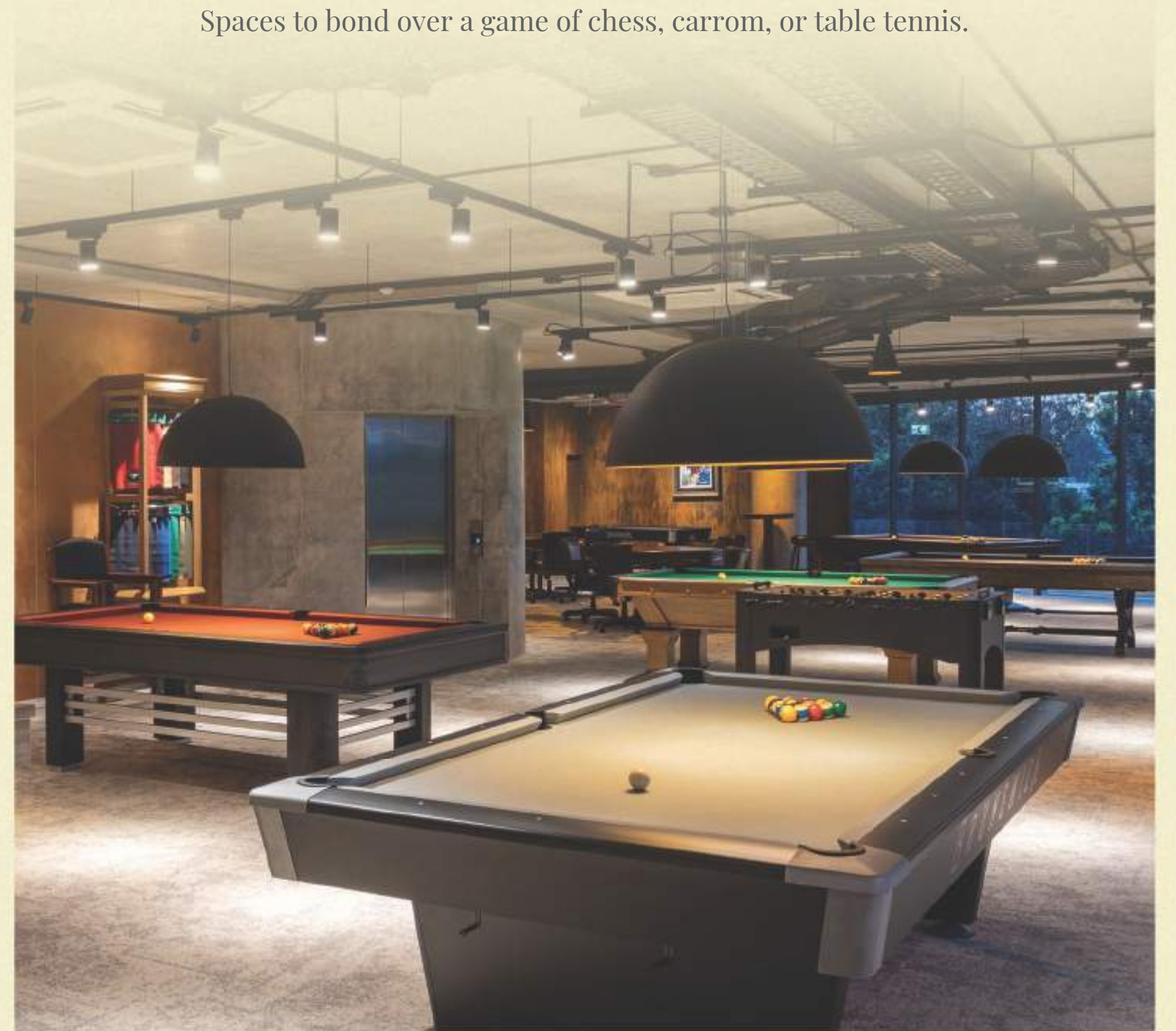
## Gymnasium

Stay fit, focused, and energized without stepping out.



## Indoor Games Zone

Spaces to bond over a game of chess, carrom, or table tennis.



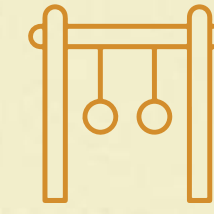




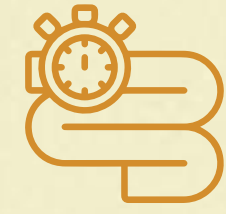
SUNRISE SUNSET DECK



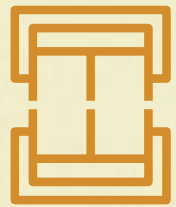
BOX CRICKET



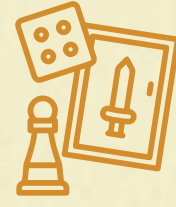
OUTDOOR GYM



WALKING TRACK



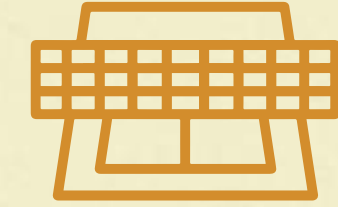
PADEL COURT



GIANT BOARD GAMES



AMPHITHEATRE



BADMINTON COURT



MINI FUTSAL COURT



MAZE GARDEN



REFLEXOLOGY ZONE



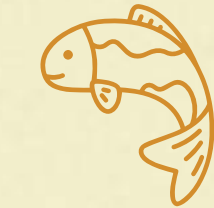
CONVENIENCE STORE



PICKLEBALL COURT



SENIOR CITIZEN PLAZA



KOI POND



DOCTORS CLINIC



# MASTER PLAN

BUILDING-1 (TOWER 1 & 2)



# LANDSCAPE AMENITIES

- 1. GRAND ENTRY PORTAL.
- 2. SUNSET DECK.
- 3. PADEL COURT.
- 4. MINI FUTSAL COURT.
- 5. PICKLEBALL COURT.
- 6. VOLLEYBALL.
- 7. BASKETBALL PRACTICE POST.
- 8. BOX CRICKET.
- 9. LANDSCAPED GARDEN
- 10. GIANT BOARD GAMES (LUDO AND SNAKES & LADDERS)
- 11. KIDSPLAY AREA.
- 12. MAZE GARDEN.
- 13. SENIOR CITIZEN PLAZA.
- 14. OUTDOOR GYM.
- 15. YOGA/MEDITATION LAWN.
- 16. AMPHITHEATRE.
- 17. REFLEXOLOGY ZONE.
- 18. LEISURE LAWN
- 19. PARTY LAWN.
- 20. KOI POND.
- 21. SUNRISE DECK.
- 22. WALKING TRACK.
- 23. SWIMMING POOL.



FLOOR PLAN

NUMBER OF TYPES - 8





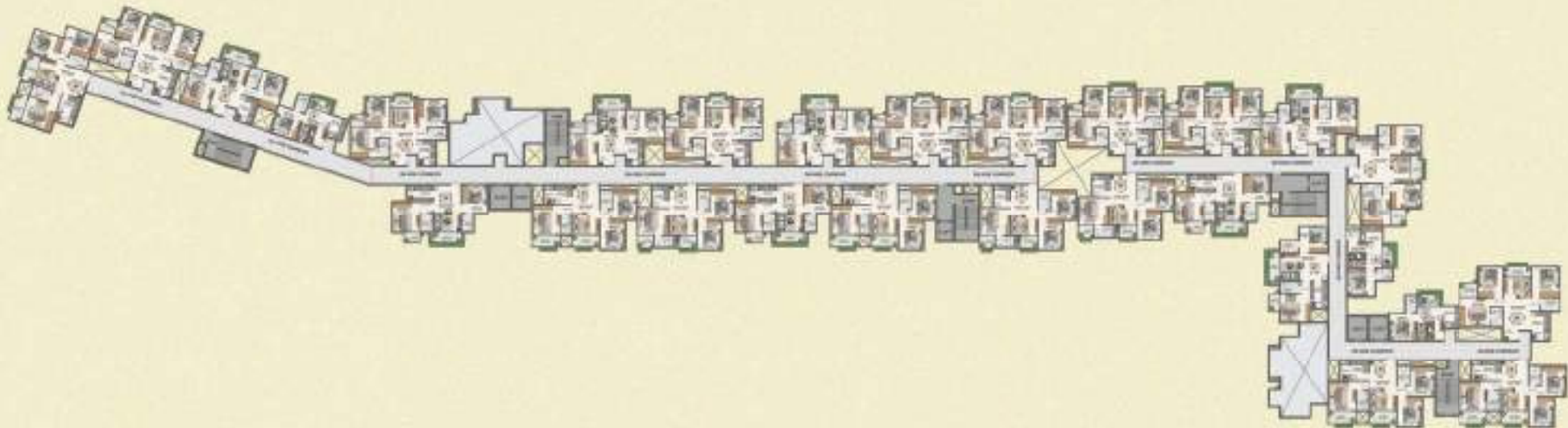
# GROUND FLOOR

BUILDING-1 (TOWER 1 & 2)



# FIRST FLOOR

BUILDING-1 (TOWER 1 & 2)





# TYPICAL FLOOR

BUILDING-1 (TOWER 1 & 2)



# GROUND FLOOR

BUILDING - 2 TOWER - 3





# FIRST FLOOR

BUILDING - 2 TOWER - 3



# TYPICAL FLOOR

BUILDING - 2 TOWER - 3





# KEY PLAN

BUILDING-1 & 2





UNIT TYPE -3BHK

NUMBER OF TYPES - 8





TYPE : 1
AREA : 1326 SQ FT



TYPE : 2
AREA : 1311 SQ FT





TYPE : 3  
AREA : 1211 SQ FT



TYPE : 3A  
AREA : 1223 SQ FT





TYPE : 4

AREA : 1187 SQ FT



TYPE : 5

AREA : 1315 SQ FT





TYPE : 6

AREA : 1311 SQ FT



TYPE : 7

AREA : 1187 SQ FT





UNIT TYPE - 2BHK

NUMBER OF TYPES - 4





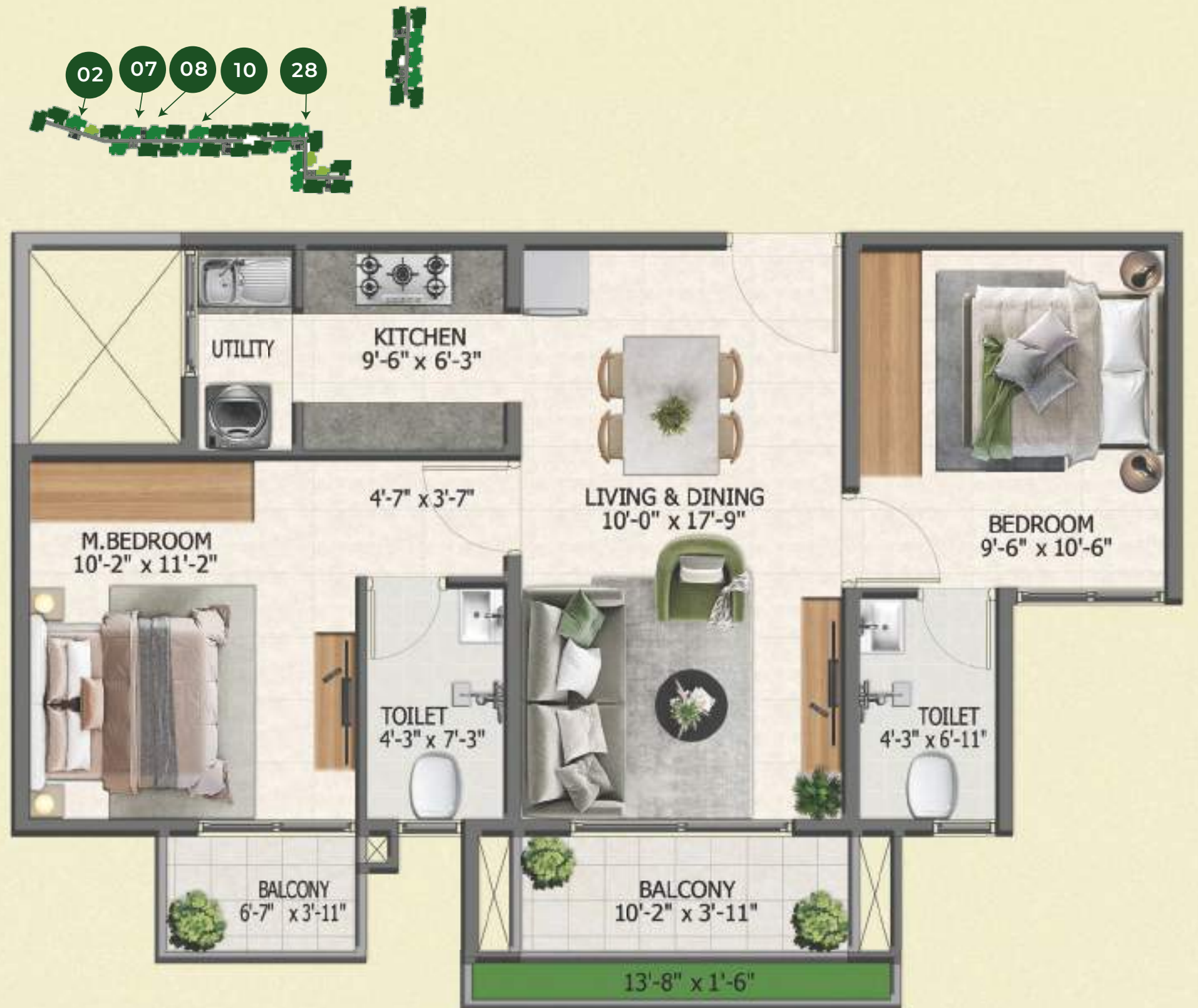
TYPE : 1
AREA : 1073 SQ FT

TYPE : 1
AREA : 1073 SQ FT



TYPE : 2
AREA : 1036 SQ FT

TYPE : 2
AREA : 1036 SQ FT





TYPE : 3

AREA : 1063 SQ FT



TOWER -2

TYPE : 4

AREA : 1036 SQ FT





UNIT TYPE - 1BHK

NUMBER OF TYPES - 2





TYPE : 1
AREA : 568 SQ FT

TYPE : 1
AREA : 568 SQ FT

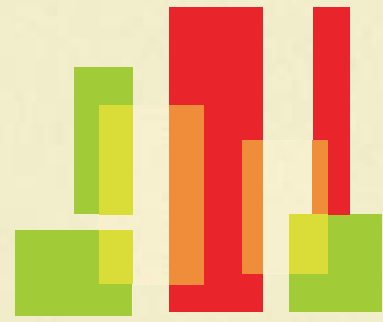


TYPE : 2
AREA : 604 SQ FT

TYPE : 2
AREA : 604 SQ FT







# SOWPARNIKA

Group stands for a vision where every aspiring family can own a home they are proud of

## About Sowparnika Group

Sowparnika has been redefining affordable housing in South India with a focus on quality, transparency, and timely delivery. With over two decades of experience and projects across Karnataka, Kerala, and Tamil Nadu, Sowparnika has become a trusted name for first-time homebuyers. Every project reflects the promise of creating not just houses, but homes where aspirations bloom.





# Achievements & Awards



## Delivered 50+

landmark projects across South India,  
setting new benchmarks in quality and design.



## 7000+

happy homes, creating vibrant communities  
filled with trust and satisfaction.



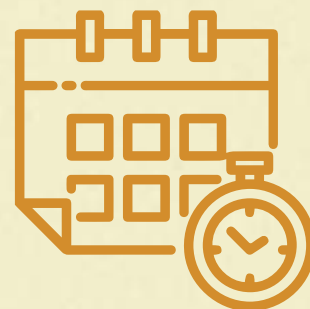
## First choice

for aspiring homeowners in Bengaluru and beyond,  
building a legacy of reliability and value.



## Af fordable luxury

housing recognized with multiple awards for  
excellence and innovation.



## On-time delivery

and unwavering customer trust have become  
the hallmarks of our reputation.





# Specifications at Whispering Petals



## Structure

- Core wall and shear wall monolithic construction for unmatched strength.
- Premium Aluminium modular shuttering system for precision and durability.



## Flooring

- Living, Dining, Kitchen & Bedrooms – Vitrified tiles of reputed make.
- Toilets – Matt finish vitrified tiles for flooring & dado up to 7 ft.
- Kitchen dado – Ceramic glazed tiles up to 2 ft above counter.
- Balcony – Anti-skid ceramic tiles.
- Common Areas – Matt finish vitrified tiles for elegance & safety.



## Windows

- UPVC windows with glazed shutters and mosquito mesh.



## Elevator

- High-quality lifts of reputed make.



## Air Conditioning

- Provision for AC in living, dining, and all bedrooms.



## Power Backup

- 100% power backup for common areas.
- 1 KW backup for 2 & 3 BHK, and 0.75 KW for 1 BHK (via limiter switch).



## Kitchen

- Granite top with stainless steel single-bowl sink and drainboard.
- Provision for chimney.
- Utility area with centralized RO water inlet.



## Toilets

- Sanitary fittings: Wall-mounted EWC, countertop wash basin of reputed make.
- Provision for chimney.
- Utility area with centralized RO water inlet.



## Doors

- Main Door: Super steel frame with dual door of reputed make.
- Internal Doors: Super steel frame with single door.
- Toilet Doors: FRP door for durability.
- Balcony Doors: UPVC glazed shutter with mosquito mesh.
- Fire-rated steel doors for fire exits.



## Paint

- Internal walls & ceilings: Emulsion of reputed make.
- External walls: Waterproof emulsion of reputed make.
- Railings: Enamel paint of reputed make.



## Electrical

- Modular switches & sockets of reputed make.
- ELCB and MCB with independent EB meter.
- Concealed copper wiring of approved make.
- Provision for washing machine point.
- TV points in living & master bedroom.

